



THERE IS ONLY ONE TRUE™ DRYWALL STUD

Telling™ Industries is pleased to present the TRUE-STUD™ Drywall Framing System. TRUE-STUD is an innovative interior framing product that incorporates engineered design elements and the highest quality raw materials available. Telling has invested well over a year in painstaking research and development prior to bringing the TRUE-STUD™ product to life.

Telling Industries
CIRCLE #142 ON INFO CARD



4 TYPES OF DEMAND FOAM-LOK™ FOAM ADHESIVE

Designed primarily for adhering foam to foam. Will not degrade the foam.

- Spray Cans (Individual or Cases)
- Solvent-Based Self Contained System
- Water-Based Self Contained System
- Brushable Water Based

Ask your Demand Products distributor or call (800) 325.7540 for your manufacturers rep or to place an order.

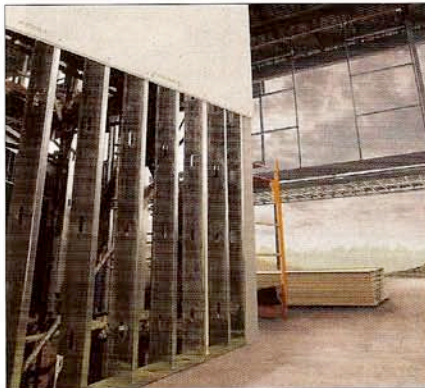
Demand Products
CIRCLE #143 ON INFO CARD



INTRODUCING THE ALL-NEW DIGITAL TAKEOFF TABLE® 2

The Digital Takeoff Table 2 is On Center Software's updated hardware solution for a more productive takeoff method. Including a custom integration with On-Screen Takeoff® and added features, the new Digital Takeoff Table 2 builds upon the technology of the first Digital Takeoff Table to further increase takeoff productivity.

On Center Software
CIRCLE #144 ON INFO CARD



NATIONAL GYPSUM'S e²XP INTERIOR EXTREME

The latest addition to the extended exposure product family, e²XP Interior Extreme can be used in a variety of interior applications that have the potential for extreme high-moisture conditions, including pre-rock applications, interior perimeter applications, owner or architect specified interiors and higher humidity areas such as basements, kitchens, bathrooms, laundry rooms and other non-wet areas.

National Gypsum
CIRCLE #145 ON INFO CARD



MUD SET BEADS ABSORB EXTREME IMPACT

Trim-Tex's revolutionary new Mud Lock Technology is revealed with the new Mud Set Bead Product Line. These superior corner beads feature patented Mud Lock Technology with 350% more bonding surface at a lower cost. Mud Set Beads will not dent or blister and absorbs extreme impact. (800) 874.2333 or www.trim-tex.com.

Trim-Tex Drywall Products
CIRCLE #146 ON INFO CARD



PAINTERS AND ALLIED TRADES LMCI

The Painters and Allied Trades Labor Management Cooperation Initiative stands out as an industry resource for leadership education. The programs are the result of a partnership with the Finishing Contractors Association and the International Union of Painters & Allied Trades.

Painters and Allied Trades LMCI
CIRCLE #147 ON INFO CARD