

TECHNOLOGY SOLUTIONS  
A DIRECT APPROACH TO ERP

ENABLING TECHNOLOGIES  
MORE THAN A PROJECT

COMMERCIAL

# CONSTRUCTECH

Identifying Automation and Technology Solutions

January 2008, Volume 11, Number 1

01.08

## BEHIND THE SCENES OF TECHNOLOGY

XML · BIM · WAN · SERVER VIRTUALIZATION

FOUR UNDERLYING  
TECHNOLOGY ISSUES  
THAT WILL HELP  
THE INDUSTRY PUSH  
FURTHER DURING 2008.

constructech.com

\*\*\*AUTO\*\*MIXED ADC 450

6973

OTHER WHEELER

MARKETING MANAGER

ON CENTER SOFTWARE

1400 WOODLOCH FOREST DR STE 400

THE WOODLANDS TX 77380-1179

|||||

PRSR STD

US POST PD

PERMIT #68

GREENFIELD

OH

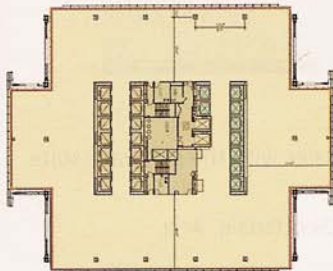
RECEIVED

1 5 2008

## TAKEOFF 3.6

Contractors typically look for technology solutions that save time and increase organization, especially for the takeoff process.

On Center Software Inc., [www.oncenter.com](http://www.oncenter.com), The Woodlands, Texas, recently launched the update of the digital takeoff product in its ProfitBuilding Suite. Features in On-Screen Takeoff 3.6 offer time saving techniques and increased document sharing capabilities.



With the Typical Groups process, users can reduce time in the takeoff process by automating a manual process. Instead of manually counting

individual conditions, estimators can select an entire room condition or floor condition, which speeds up the takeoff process in general.

The latest release also integrates with the file delivery service from YouSendIt, [www.yousendit.com](http://www.yousendit.com), Campbell, Calif., allowing users to send, receive, share, and track large files with other users on Takeoff 3.6's Project Express. The basic version will send files up to 100 MB (megabytes) in size with a three GB (gigabytes) bandwidth per month. With the YouSendIt Business Plus upgrade, files can extend up to two GB in size and a 200 GB bandwidth per month for increased document sharing.

---

### ON-SCREEN TAKEOFF 3.6

[www.oncenter.com](http://www.oncenter.com)